

On Today's Editorial Page  
**Defense Or Overkill (IV)**  
 Editorial  
**Good Illinois Budget**  
 Editorial

# ST. LOUIS POST-DISPATCH

FINAL  
 ★  
 ★  
 ★  
 Star  
 Pages 15A and 16A

Vol. 100, No. 66

WEDNESDAY, MARCH 8, 1978

WEDNESDAY, MARCH 8, 1978

15¢

## Nurse Tells Of Seeing Poison In Intravenous Feeding Tube

**By CARTER STITT**  
 of the Post-Dispatch Staff

A nurse at Jewish Hospital has testified that she saw a dark blue substance, apparently being given intravenously to an elderly patient, in about 5:30 a.m. on Oct. 4, 1976.

The patient, identified as an elderly woman at the time, the nurse said, died on Oct. 4, 1976. The nurse, Yetta Kardesch, who is a nurse at Jewish Hospital, said she was called to Mrs. Kardesch's room by an orderly, who reported trouble with the intravenous feeding. Mrs. Kardesch's recollection was that the feeding was being given through the tube when she noticed the dark blue color in it and had some dark blue stuff on it," said Mrs. Hargreaves, head nurse in the hospital.

Kardesch, a heart specialist, is charged with mixing poisons with medicine with intent to harm. The blue substance that the nurse found

## Illinois Clobbered Worst Finishing Touch: More Snow

With an additional 7.8 inches of new snow by this morning in St. Louis, and an inch more predicted for today, the weather bureau is warning whether a grumpy and persevering day. Mrs. Hargreaves was serving lunch at a home of a friend last night.

Disposal for a hour of such had been, the new snow made driving tedious for motorists heading to work today. Streets and roads were snow-packed, and the expressways were clogged with abandoned cars set aside — reminders of how treacherous was Tuesday night's

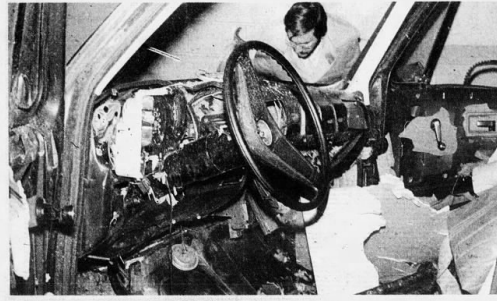
State lanes were running 45 minutes behind schedule in this morning's traffic.

The National Weather Service said that the metropolitan area was near the western end of a snow band that stretched from Nebraska eastward to the Virginia coast. To the south of the snow, heavy rains fell, spawning streams of fresh flooding in sections of southern Illinois.

The Missouri Highway Patrol said it was running three hours behind on service calls this morning, and it had two words of advice for motorists: Stay Home. Be

Patrol Capt. Robert Stamp said the storm left highways in shape as bad as from any previous storm this winter.

The Illinois apparently was the hardest hit of the new storm. Springfield, Ill., was hit by about 10 inches of snow. St. Louis was hit by about 8 inches, and Illinois State Police said that the blizzard snow, that was probably the cause of an increase in traffic fatalities. A Rochester City, Ill., man driving south of Springfield, drove across a railroad grade crossing, appear- ing beneath the snow on many roads.



**BOMBED AUTO:** The bomb-damaged interior of William Olliverson's automobile after the car had been towed to the police garage in Paducah, Ky., Olliverson, of south St. Louis

County, was critically injured in the blast Tuesday in the parking lot outside his motel in Paducah. (Post-Dispatch Photo by Larry Williams)

## Hat, Cushion May Have Saved Blast Victim's Life

**By WILLIAM FRIEVOGL**  
 of the Post-Dispatch Staff

PADUCAH, KY. — A hard hat and a thick seat cushion may have saved William E. Olliverson's life Tuesday when a bomb exploded under the seat of his recreational vehicle, Paducah authorities said.

The man's hat and cushion may have cushioned the explosion and the hat had cushioning properties that had been blown against the roof of the vehicle by the blast.

Olliverson, 36, was in critical condition today at Western Baptist Hospital in

Paducah with serious injuries to the right hip, abdomen and leg. Authorities have been unable to question him, but an antidote-toxic guard is pinned at the hospital.

Because Olliverson was the boyfriend of Shirley Marie Tyson, one of the victims of the "South County bomb," St. Louis County police and federal agents from St. Louis have gone to Paducah to aid the investigation. St. Louis County Detective William Dyer said that there were "possibly" links between Tuesday's bombing and the three bombings — two of them fatal — last fall in south St. Louis County.

## Inquiry Board Holds Hearing On Mine Strike

WASHINGTON (AP) — A broad warning of violence to the coal fields, a presidential panel in holding a hearing on the strike could lead to a hearing on the strike, the panel said.

The panel is expected to hear testimony from President Jimmy Carter, who returned to create the "Coal Industry Act" after today's hearing. Once that report is handed to the president — that could be tonight or Thursday — he can direct the attorney general to obtain a court injunction against the walkout.

Administration officials say a federal subpoena of the mines is still possible if a court order is ignored.

The board is expected to hear testimony from the president, he cannot seek an injunction after today's hearing. Once that report is handed to the president — that could be tonight or Thursday — he can direct the attorney general to obtain a court injunction against the walkout.

troops to enforce an injunction. "There will be no..."

Under Tull Hurley, the report can be ordered back so that the Carter administration can get all the striking miners back to work.

The board would require emergency charges, prepared by higher ability that ends only in the coal strike, as co-operators who fail to cut back on consumption during the emergency.

Consumers who conserve electricity — that is, those who control their usage by an amount specified by the PSC — would be rewarded from saving. Its

### wednesday

**local**  
**BAD NEWS FOR MASS TRANSIT:** Federal officials say the St. Louis area is likely to get the money it wants for a proposed streetcar system in the near future. Page 1A

**OVERTIME HEARING:** Union Electric Co. received a ruling from its opponents at a 12-hour hearing on air pollution problems at two of its plants. Page 1E

**NEW RIVERFRONT PROPOSAL:** The St. Louis Port Authority would like to fill in the riverfront, but needs several million to do it. Page 1E

**sports**  
**PAINFUL DIFFERENCE:** Barclay Flagler is learning that there is a great difference between playing hockey for the Blues and coaching for them. Tuesday night's lesson was a painful 7-2 defeat administered in Boston. Page 1D

**features**  
**ON RIGHT TRACK?** The railroad car restaurant is hard to find, and had two previous operators. The third effort may work. Doing Out. Page 2F

**THOUGHTS OF A POET:** Stephen Spender spoke in St. Louis and disclosed his ideas on various subjects from literature to living in Houston. Page 2F

### CAT Fight

#### A Doctor's Machine Vs. The Rules

Dr. Bruce Voss, a radiologist who operates a \$60,000 "CAT scanner" at St. Joseph Hospital in Alton, has become the center of an area controversy. Should he be forced to meet his opponents' machine, but if it is, or return it to the manufacturer?

Some reports say that the CAT — short for "computerized axial tomography" — is the most important development in radiology since Wilhelm Roentgen discovered the X-ray in 1895.

It has been called the technologi- cal marriage of the X-ray and the computer. The machine uses a detector-vision connection of anatomy in the brain and body.

The CAT is accurate, safe and fast, particularly in the diagnosis of head injuries and brain disorders. Without a CAT in Alton, a patient with a critical head injury would be diagnosed with the help of a standard X-ray or would have to be transported to a nearby city for CAT scans.

So it is not surprising that Voss

See CAT, Page 1E

### Snow Ending

Official forecast for St. Louis and vicinity: Snow ending this evening with an additional accumulation of 1 inch; clearing and ending tonight, with the low around 22; empty sunny tomorrow, with the high in the middle 30s; somewhat warmer or Friday through Sunday, with the high in the 40s and the low around 28.

Forecast by National Weather Service at St. Louis

**business**  
**WORLD'S BEST:** Joe Girard, the world's greatest automobile salesman, is a sales junkie who enjoys the thrill of the sale. Page 1A

**SPENDING BOOST:** Union Electric Co. will double its capital spending during 1978, the firm says in its new annual report. Page 1A

### inside

64 Pages

**Business:** 16A-1A  
**Classified Advertising:** B2-D  
**Editorial:** 7E  
**Expenditure:** 1A-1E  
**Fuel Section:** 1A-1C  
**Hot Line:** 2F  
**News Analysis:** 1E  
**Obituaries:** 1A  
**People:** 1A  
**Reviews:** 1E  
**St. Louis:** 1E  
**Sports:** 1A-D  
**State Capital:** 1A  
**TV-Radio:** 2F

### CAT SCAN:

Patient about to undergo brain scan by machine that is in dispute.